



## Algebra I & Math 7-8 Syllabus

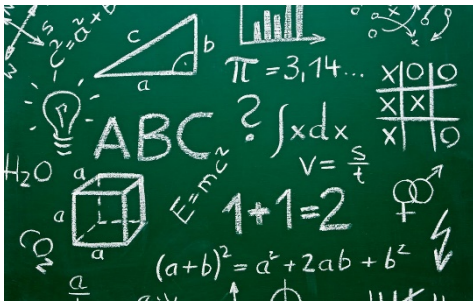
*Mrs. Tossava*

Room 213  
Sky Ranch Middle School  
[htossava@washoeschools.net](mailto:htossava@washoeschools.net)  
775-476-6492 (google voice #)



Welcome, Matterhorn Mathematicians! I am honored to engage in mathematics with you this year!

**By the end of this course, you will be able to effectively.....**

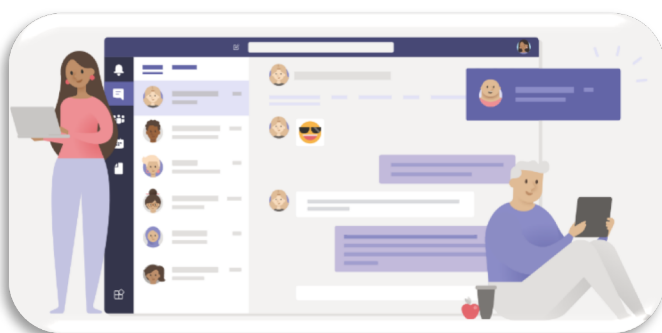


- Make sense of problems and persevere in solving them by looking for and expressing regularities/patterns
- Reason abstractly and quantitatively while constructing viable arguments and critiquing the reasoning of others
- Model with mathematics using CREATIVITY and appropriate tools strategically
- Attend to precision by analyzing own work and the work of others
- Look for and make use of structure and express regularity in repeated reasoning

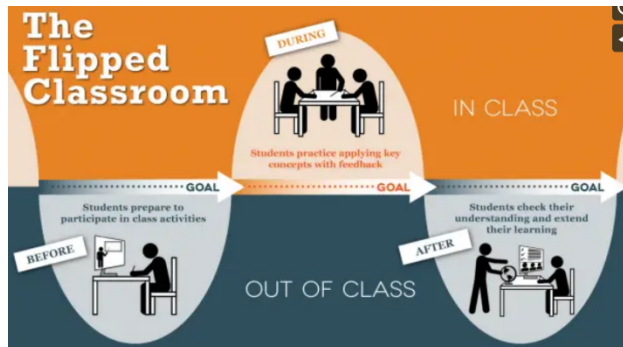
**Accomplishing this will require DIGITAL & IN-CLASS COLLABORATION**

As a mathematician, you'll work hard to make sense of concepts independently and practice, but you'll also have to share your ideas and critique the ideas of others because this is when the best learning happens WHILE SOCIAL DISTANCING.

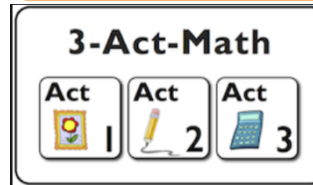
You need your laptop, fully charged, EVERY DAY to access, complete & turn in all assignments. If you're coming to school make sure you have earbuds, your charger & stylus. Keep your laptop inside your case ANY TIME you are not using it.



**Microsoft TEAMS is how we assign & collect ALL assignments. Get into TEAMS every day, every class period, during that class period's regular scheduled time, even when you are home.**



We will be using 21<sup>st</sup> Century approaches to enhance learning – here are some of them!



## Team-wide Learning Procedures:

1. **ATTENDANCE!!** **DISTANCE LEARNING STUDENTS MUST LOG INTO TEAMS EVERY DAY or EMAIL ME IN ORDER TO AVOID ABSENCES!** Hybrid/in-person students will be marked absent if they are not present in class on their scheduled days.
2. All students are expected to complete assignments in Teams as scheduled. Any in-class time will be spent SHARING IDEAS, critiquing the work of others, giving/receiving feedback, clarifying misconceptions and celebrating math!
3. If you're an everyday or hybrid student, line up in a single file 6ft away from each other outside of the classroom beginning at the "Line Up Here" sign until you're invited to enter the classroom. You will need to apply hand sanitizer each time you enter the classroom. The classroom door will remain open at all times to avoid contact with the handle. You will clean your desk and chair before leaving.
4. If your device battery dies you may have to work out of your math workbook instead of the task everyone else is doing. This will be boring – trust me. **MAKE SURE YOU CHARGE YOUR LAPTOP BEFORE CLASS!**
5. Check the "assignments" in Teams or Infinite Campus to see any missing work and request a zoom meeting if you need help completing it.
6. Communication! The Key to Your Success:
  1. **INFINITE CAMPUS** – Parents, please check Infinite Campus weekly to stay informed about your child's academic and behavior progress. These grades are updated at least once/week.
  2. **Phone calls and emails** will be used to communicate between home and school as desired.
  3. **Matterhorn Squadron website:** <https://washoeschools.net/matterhorn> CHECK IT DAILY FOR ANNOUNCEMENTS, **WEEKLY AGENDAS** AND RESOURCES!
  4. **Microsoft TEAMS** – for announcements, resources, and all assignments!



## *Syllabus Acknowledgement (Worth 10 points!)*

Parents – Complete this [Microsoft Form](#) to acknowledge that you have read through this syllabus with your child. Thank you for your support ☺

Mrs. Tossava.